

# The two-in-one tooth guard

## Quick Guide



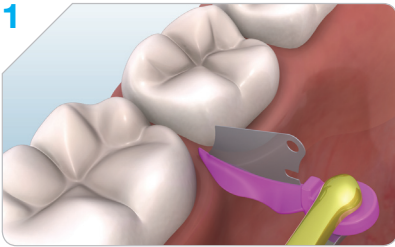
### WedgeGuard

WedgeGuard is a two-in-one tooth shield. First it protects the adjacent tooth during cavity preparation, then the guard is detached while the wedge remains where it is, ready for the insertion of a standard matrix band beside it. The detachable guard is the unique feature – it means the wedge stays in place, which reduces bleeding of the papilla. And because there's no risk of the bur nicking the adjacent tooth, prep is much quicker and stress free.

### Features and benefits:

- Cleaner, risk-free working area
- Prevents bur damage to adjacent tooth
- Protects gingival papillae, so less bleeding
- Wedge stays behind, so less trauma than other guards
- Saves time, cuts stress
- No cost of second wedge
- Guard 60 microns thick
- Retains all the qualities of Wave-Wedge
- Versatile – useful in a number of procedures

#### 1 Insert

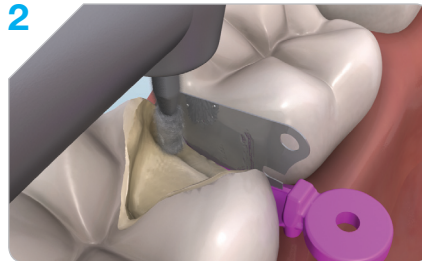


Using tweezers (ideally Triodent Pin-Tweezers for maximum maneuverability and security), insert the appropriate sized WedgeGuard. Grip the front part of the Pin-Tweezers firmly and apply steady pressure. Gradually advance the wedge between the contact points.

#### *Clinical tip*

Some clinicians routinely place a V3 ring interproximally to separate the teeth slightly while the anaesthetic takes effect. Alternatively, you can also create separation by inserting a wooden wedge.

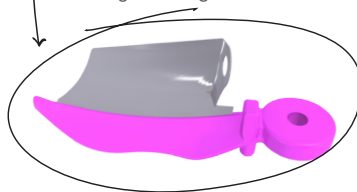
#### 2 Prep



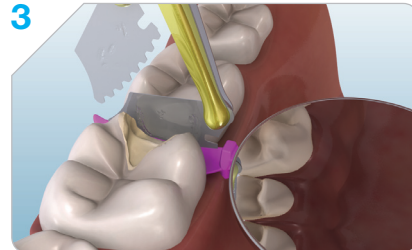
Cut the cavity. With no worries about hitting the neighboring tooth, you will almost certainly be able to prep the tooth quicker. Trim the top part of the metal guard away if necessary for better occlusal view.

#### *Clinical tip*

If you are using the WedgeGuard on a second molar, it can be difficult to grab the guard by the hole. In this case, pre-bend the guard towards you before inserting the WedgeGuard.



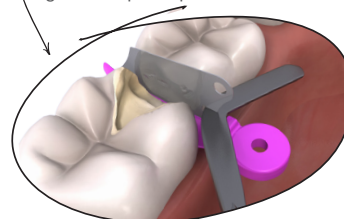
#### 3 Remove Guard



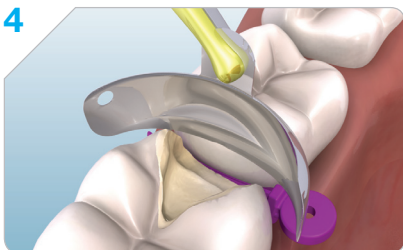
Grip the guard, then hold the wedge in place with the back of a mirror while pulling up on the guard. The guard will come free. Grab it with tweezers and remove.

#### *Clinical tip*

If necessary to help free the guard after cavity prep, place the tip of a flat-bladed instrument in the notch at the base of the guard and push upwards.



#### 4 Place Matrix



Place a V3 Matrix band between the wedge and the cavity without removing the wedge.

#### *Clinical tip*

If it is too tight to do this, withdraw the wedge slightly to allow the matrix to drop and then push the wedge back in while pressing down on the matrix tab. Now proceed with the restoration.

### More great products from Triodent

To find out more about any of our products, call our customer services team or visit our website: [www.triodent.com](http://www.triodent.com)

US: 1-800-811-3949 NZ: 0800 TRIODENT  
CA: 1-866-316-9007 AU: 1800-350-421  
UK: 0800-311-2097 INT: +64 7 549 5612